

LENT RISE PTA



NEWSLETTER

NOV
2024

Welcome from the PTA

Hi everyone,

We trust that you are all well and has a great Halloween break!

The school has shared their wish list for this year's PTA fundraising. This year's request came courtesy of Mr North, and it's for the purchase and installation of netball and basketball hoops for pupils to enjoy during break times and PE lessons. The project goal for this is **£3500**.

We've had s'mores and autumn treat stalls, and we have lots of festive fun on the horizon.

We always welcome ideas and new joiners, so please don't hesitate to reach out to us with any questions on pta@lrschool.co.uk.

Your PTA



Wish List

2023/24 - OUTDOOR LIBRARY

Requested by Miss Boxall. We are happy to announce that the library will be up and running soon - launch details to follow soon!



2024/25 - NETBALL & BASKETBALL HOOPS

Requested by Mr North. In his own words: *"These hoops will increase sporting access for our children and increase the number of opportunities afforded to our students to play a wide variety of sports. This helps our goal of keeping our children healthy and active throughout their time at Lent Rise School."*

Upcoming

- **Breakfast with Santa:** Saturday 30th November
- **Bottle Line:** Tuesday 3rd December

UPCOMING EVENTS



**Breakfast with
Santa**

Saturday 30th November
9am & 11am

Child £9.00
Adult £5.00

BREAKFAST WITH SANTA

Event Details:

Child: £9.00, Ault: £5.00

Price includes:

Breakfast
Santa meet and greet, Gift from Santa
Elf story time, Christmas Tattoo
Christmas crafts to make & take home:
Bead bracelet / keyring
Letter to Santap
Scratch Art
Christmas Colouring / Puzzles

Child breakfast:

Two pancakes
Yogurt
Fruit Cup
Juice drink

Adult breakfast:

Pastry
Unlimited Tea / Coffee

Ticket purchases:

After school on 11th, 13th, 18th Nov

or

online via link below

*online ticket purchases are
subject to added processing
fee.

Further after school sales
may be available subject to
availability.



UPCOMING EVENTS



Christmas Fayre

Wednesday 4th December
3.15pm - 5pm

Please come along and join teachers and staff at a fun a festive Fayre.

Fun stalls and games, festive treats, yummy snacks

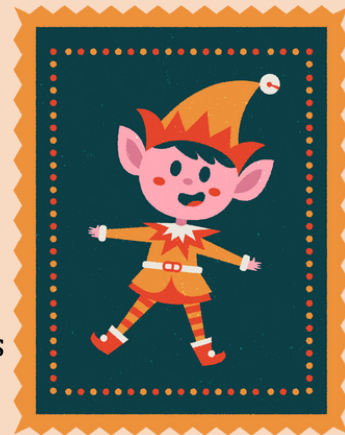
DATES FOR YOUR DIARY

CHRISTMAS CARD DESIGNS & GIFTS

ASAP

Children were given the opportunity to create festive design during class time on the w/c 21st October.

Once all design are received, parents will be given an access code which will allow them to order their child's Christmas cards and gifts online. You should receive this shortly.



HOOK A BAG

BAGS SENT HOME W/C 25TH NOVEMBER. RETURN BY 3RD DEC



The Hook-a-Bag stall is s Christmas fayre favourite. On the week commencing **25th November**, pupils will receive a paper bag to take home. Please decorate it and fill it with goodies - it can be sweets, toys, books - whatever you think a child would like to win as part of the stall. Bags are to be returned by **Tuesday 3rd December**.

BREAKFAST WITH SANTA

SATURDAY 30TH NOVEMBER, MORNING

The most important meal of the day at the most wonderful time of the year! Breakfast, crafts, activities, festive fun and, most excitingly, meeting Mr Claus himself. Parent volunteers greatly appreciated - please check ParentMail Forms to submit your availability!



DATES FOR YOUR DIARY

BOTTLE LINE

TUESDAY 3RD DECEMBER, SCHOOL DROP OFF

The ever-popular Bottle Line is back on **Tuesday 3rd November**. Bring a bottle (or bottles) of unopened, in date beverages. during school drop off. Ideally we want to be able to spell out LRS with as many bottles of possible. These bottles will be used for the Tombola at the Christmas Fayre.



CHRISTMAS FAYRE

WEDNESDAY 4TH DECEMBER, 3.15PM - 5PM



it's the School Christmas Fayre! Expect games, festive treats, tombola, activities and fun. It will be after school on Wednesday 4th December. Stalls will accept cash and QR code payment.

CHRISTMAS RAFFLE

TICKETS ON SALE SOON; DRAW ON FRIDAY 6TH DECEMBER

Raffle tickets will be on sale shortly, along with a full list of goodies that are up for grabs. Prize draw will be on **Friday 6th December**.



OCTOBER HIGHLIGHTS

AGM

We had an excellent turn out for the PTA's AGM. Great to see so many new faces and thanks to Mrs Watson, Mrs Small and Ms Parker for representing the LRS teaching body. The previous year's committee were re-elected in and we're excited for the year ahead and continued partnership with the school.

AUTUMN TREAT STALL



Candy apples, chocolate-dipped marshmallows and autumnal goody bags sold out in a flash. We heard the feedback that some families who exited by the top gate missed out on the sales, so we ensured we had this area covered when it came to our S'mores stall!

GIMME S'MORE



Delicious s'mores kits, carefully put together by PTA volunteers, and sold just in time for Bonfire night. Yum!

GET INVOLVED

ASDA CASHPOT FOR SCHOOLS

Whether you shop at Asda or not, you can raise money for the school just by signing up to the cash pot! The school receives **£1 per family that signs up**.

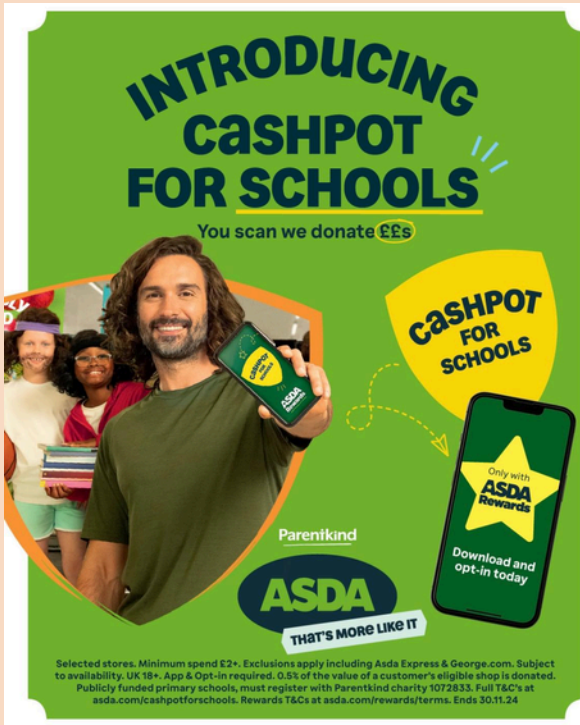
💰 Download the rewards app and add Lent Rise to the cash pot.

🎉 And if you do shop at Asda, they will donate 0.5% of every shop in store and online until Nov 30th.

Your own Asda rewards and cash pot will not be affected. It's just an added bonus to the school fundraising.

Current status: Just shy of £200 in the cash pot - lets get more!

Ends 30th November.

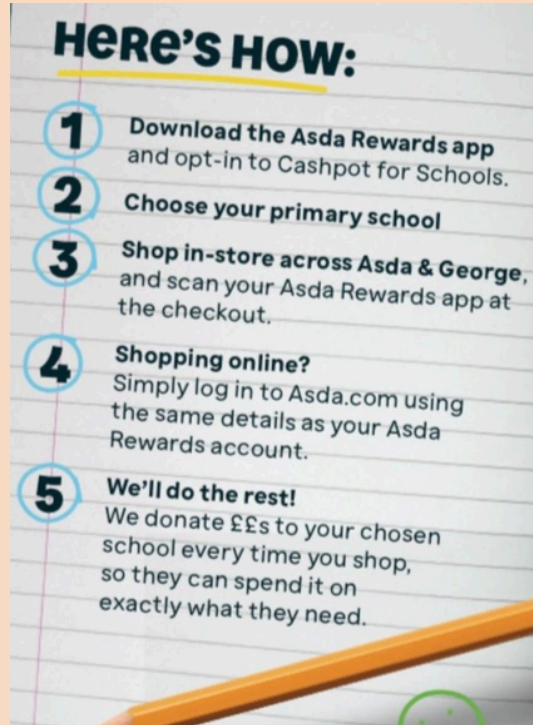


INTRODUCING CASHPOT FOR SCHOOLS
You scan we donate £££

Parentkind
ASDA
THAT'S MORE LIKE IT

Download and opt-in today

Selected stores. Minimum spend £2+. Exclusions apply including Asda Express & George.com. Subject to availability. UK 18+. App & Opt-in required. 0.5% of the value of a customer's eligible shop is donated. Publicly funded primary schools, must register with Parentkind charity 1072833. Full T&Cs at asda.com/cashpotforschools. Rewards T&Cs at asda.com/rewards/terms. Ends 30.11.24



HERE'S HOW:

- 1** Download the Asda Rewards app and opt-in to Cashpot for Schools.
- 2** Choose your primary school
- 3** Shop in-store across Asda & George, and scan your Asda Rewards app at the checkout.
- 4** Shopping online? Simply log in to Asda.com using the same details as your Asda Rewards account.
- 5** We'll do the rest! We donate ££s to your chosen school every time you shop, so they can spend it on exactly what they need.

GET INVOLVED

YOUR SCHOOL LOTTERY

Tickets cost just £1 per week. There is a guaranteed cash winner for LRS every week plus the chance to win the **£25,000 jackpot**.
The draw takes place every Saturday.

Please follow our referral link to sign up:

<https://www.yourschoollottery.co.uk/referral/173512303/1260736039>
or click [here](#)



**SUPPORT OUR SCHOOL
PLAY OUR LOTTERY**

- Tickets cost just £1 a week
- The easy way to help us raise funds
- Local cash prizes every week

PLAY NOW

18+ GambleAware

The poster features the Lent Rise School logo and an illustration of a teacher at a blackboard and a student using a tablet, surrounded by educational icons like a rocket, a graph, and a book.



SUPPORT OUR LOTTERY TODAY

£1 per week
Weekly cash prizes
£25,000 jackpot

How it works...

It's simple—choose 6 numbers between 0-9 and if they match the weekly lottery draw, you win great prizes. One of our players will win a cash prize every week, maybe even the £25k jackpot! Tickets cost just £1 per week and the proceeds are donated to Lent Rise School.

Every Saturday at 8pm the numbers are drawn and posted online. Winners are notified by email and winnings paid into the account of your choice.

The easiest way to join our lottery is online by direct debit or debit card.

It's so easy to join and will make a real difference to Lent Rise School

Splitting the £1.00

- 40p goes to our school
- 36p goes to cash prizes
- 20p goes to admin costs
- 4p goes to VAT

The Maths... 100 tickets sold a week means
= £30 weekly cash prize
= £2,080 a year for our school

Buy A Ticket

18+ GambleAware

The poster includes a pie chart showing the breakdown of the £1.00 ticket price and a calculator icon.

COMPANY MATCHING SCHEMES

Match funding is a scheme where a company matches funds raised for a charity. Does your work offer match funding? Or donate for time volunteered? It's an easy, stress free scheme that could mean thousands for the school.

Please check your with work and get in touch.

VOLUNTARY ROLES: WE NEED YOU!

We are delighted to welcome all the new joiners from this year, particularly new Reception parents. Thank you and warm welcome!

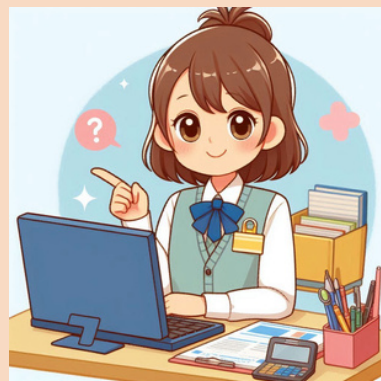
We're a small and lean PTA and we're grateful for any time people can spare - even just 30mins really can make all the difference!

If you would like to help from **the comfort of your own home** and **around your work schedule**, we have some **exciting non-trustee, volunteer roles available!**

If you're interested in any of the roles below, please email us on pta@lrschool.co.uk - we look forward to hearing from you!



**PRE-LOVED UNIFORM
COORDINATOR**



GRANTS RESEARCHER



**COMMUNITY DONATION
LIAISON**



**SOCIAL MEDIA
COORDINATOR**

YOUR PTA

PTA COMMITTEE

| | | |
|-------------------|---------|--------------------|
| Chair | Melissa | Y1 & Y2 Mum |
| Vice Chair | Elham | Reception & Y2 Mum |
| Secretary | Sharon | Y6 Mum |
| Treasurer | Lak | Nursery & Y5 Mum |

CLASS REPS

| | | |
|------------------|------------------------------------|---------------|
| Reception | RP - Liliia | RK - Kam |
| Year 1 | 1JR - Emily | 1F - Andrea |
| Year 2 | 2BE - Sati | 2W - Janine |
| Year 3 | 3CH - Kerry | 3A - Ranjitha |
| Year 4 | 4HP and 4V - Sri, Saraang & Sophie | |
| Year 5 | 5N - Annette | 5K - Janine |
| Year 6 | 6JS - Deepthi | 6V - Sharon |

ABOUT US

WHO ARE WE?

We're a small and lean PTA and we would love to welcome new joiners. The PTA is wholly run by volunteers, many of whom work full time. We're grateful for any time people can spare - even if it's just 30mins, it really can make all the difference! Come join us, it's fun! Reach out on pta@lrschool.co.uk

WHAT DO WE DO?

The PTA raises funds for the school, helping to pay for things the school would otherwise not be able to fund. Last year's target was an all-weather library, with the aim of providing a peaceful place for children to read outdoors. This initiative will be particularly beneficial for SEND pupils.

HOW MUCH DID WE RAISE?

Last year **we raised over £12,000** for the school and the plans for the library are in place – with money leftover to fund other initiatives, including the welcome bears for the Reception starters and paying for the coaches for the Year 6 residential.



The PTA depends on the kindness and generosity of volunteers. We would like to thank all the parents, carers, teachers, and staff who have supported the PTA in our events and planning. Your contributions, big or small, make a huge difference to our school and our children.

We are very grateful for your time, energy, and donations. We look forward to seeing you all soon and working together to make Lent Rise School the best it can be.

