

Autumn Term - Year 6 - Natural Disasters

English

We are focusing on the theme of children sailing around the world through a balanced argument, generating and proposing our own ideas about this topic

We will also apply knowledge of our class text, *Kensuke's Kingdom*, to write a narrative from the perspective of a different character, focusing heavily on our oracy skills to generate new ideas

We will also analyse and write our own:

- Survival on a Desert Island guide
- 'How to Steal Christmas' instructions



SPaG

- Varied sentence structures
- Relative clauses
- Commas
- Fronted adverbials
- Direct speech
- Revisiting concepts taught in previous years to ensure knowledge is understood and applied

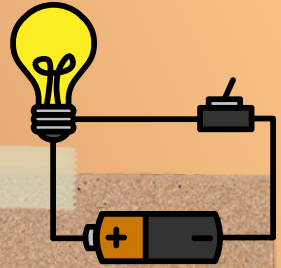
Reading

We are reading 'Kensuke's Kingdom' by Michael Morpurgo. In Guided Reading, we will explore texts including:

- Into the Volcano by Jess Butterworth (A Novel),
- 'The Shadow' by Robert Louis Stevenson (Poem)
- The Bridges by Tom Percival (Picture Book)



Science



Our science topics this term are:

- Light and Shadows – how we see, how shadows are formed and change, reflection, refraction and the colour spectrum.
- Electricity – understanding and creating electrical circuits

Art

We will be exploring the work of Hokusai, embedding our painting techniques to create our own watercolour piece in the style of the great Japanese artist.



Humanities

Our topic is Natural Disasters, which will see us exploring:

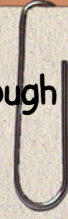
- How various natural disasters occur
- Where in the world they are most frequent
- The human and physical impacts.



Maths

We will continue to apply our arithmetic, reasoning and problem-solving skills through our online platform: MAGMA.

- Place Value
- The Four Operations (with the introduction of long division)
- Fractions (with the introduction of dividing fractions by integers)
- Converting Units of Measure



PE & Games

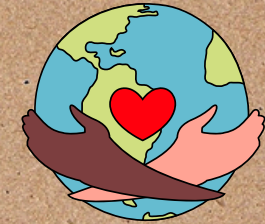
Our units will be:

- Tennis
- Football
- Fundamental Movement - Ball Manipulation
- Gymnastics Sequenced Balances



RE

We will be exploring the worldviews of humanists.



DT

- We will be making our own sushi, exploring its link to Japan and the seasonality surrounding this famous dish.



Homework

The following homework is set on Century Tech weekly:

- Maths, Science and English/Reading.
- Spellings will be set on Emile.

Music

We will be focusing on:

- Exploring and creating our own musical rhythms and patterns.



PSHRE

Following the Jigsaw scheme, we will be focusing on:

- Being a global citizen
- Understanding and empathising with others

